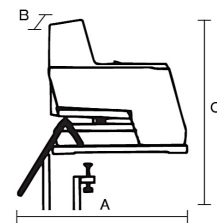


## Three staplers in one



### Rapid 106 Electric

<b>Stapling performance:</b>	Flat and saddle stapling up to 50 sheets (80gsm), loop stapling up to 20 sheets (80gsm)
<b>Magazine capacity:</b>	210 staples Rapid 66/6-8+
<b>Stapling depth:</b>	Variable adjustment up to 100mm
<b>Weight:</b>	4,200g
<b>Supplied with:</b>	Wide work table, 250x150mm, 0.7kg. Pedal 0.7kg
<b>Optional extras:</b>	Rapid 252 stapling head for loop stapling, rail for saddle stapling, narrow work table (60mm) with anvil, opto cables (40 and 70cm)
<b>Voltage/frequency:</b>	230V/50Hz, 240V/50Hz, 115V/60Hz
<b>Dimensions:</b>	A: Length 250mm B: Width 60mm (narrow work table) 250mm (wide work table) C: Height 438mm



### Your benefits

- **Varied applications – three staplers in one: flat and saddle stapling (loop stapling as optional extra).**
- **Flexible – two or more staplers can be linked for simultaneous stapling.**
- **Functional – adjustable stapling depth and variable impact force.**
- **Pedal supplied as standard equipment.**
- **Quality – reliable operation, long service life (replaceable stapling head).**
- **Safe to use – stapling head guard and clearly visible, easy to access stapling zone.**
- **User-friendly – front-loading. Automatic or pedal-controlled stapling.**



Flat stapling with the R106E. Automatic or pedal-controlled stapling to a depth of up to 100mm.

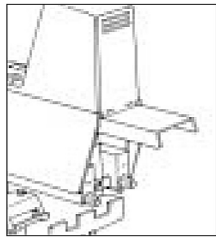


Loop stapling secures the sheets and ensures easy filing without making ugly punch holes. Brochures remain attractive, without any loss of text or pictures.

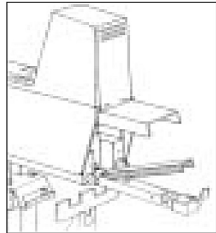


Saddle stapling with the R106E. Adjustable paper guide for precise stapling. Pedal-operating stapling.

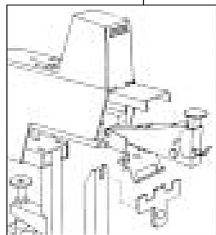
# R106 Electric



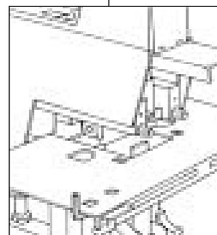
Safe to use – will not staple when stapling head guard is up.



Front loading – fast and convenient.

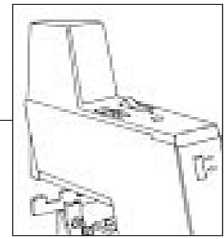
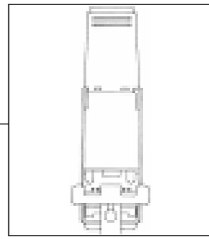


Easy to switch stapling heads: Rapid 2EL/106 for flat and saddle stapling, Rapid 252 for loop stapling.

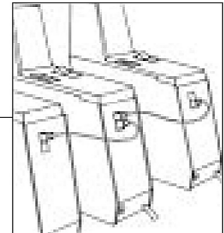


Adjustable stapling depth up to 100mm (flat stapling).

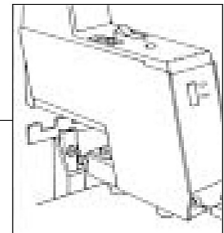
60mm with narrow work table 250mm with wide work table.



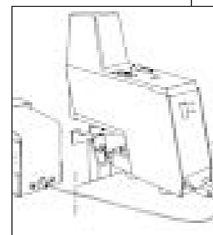
Variable impact force.



Serial mounting via opto cables for greater production capacity.



Silent – solenoid plunger with electronically adjustable impact, damped return stroke and feet.



Pedal – simply plug in.

## Professional precision

**THE R106E IS SIMILAR TO THE R105E, BUT INCLUDES A WORK TABLE FOR FLAT AND SADDLE STAPLING.**

It can staple brochures or folders, with the work table folded down, as speedily and easily as it staples loose sheets or stacks of paper in the flat position. And it can be fitted with an insert stapler for loop staples (optional extra).

All Rapid products are subjected to comprehensive quality controls, from stringent component tests and exacting performance tests to very rigorous life-cycle tests. These quality control procedures are carried out both prior to manufacture (as part of all design and development work) and during manufacture (as continual product audits). We are, of course, certificated in accordance with the ISO 9001 quality management system and the ISO 14 000 environmental management system.

Narrow work table (60mm) with anvil. (Optional extra).



Special rail for saddle stapling with one or more R106E staplers. (Optional extra).



Rapid 252/106 stapling head for loop stapling. (Optional extra).



Simultaneous stapling action via linked opto cables (40 or 70cm). The staplers are sequence controlled, to avoid overloading the power supply. (Optional extra).

