

EBA 0101 HDP

The ideal solution for making discarded hard drives from personal computers, notebooks, printers and copiers unusable.

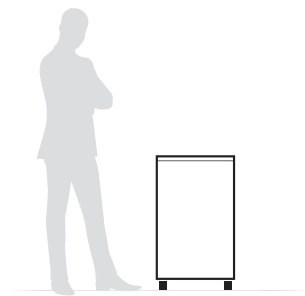
Level H-3 3,5" / 2,5" Hard Disks

Punching cycle: 15 s



Technical specifications

Power	230 V / 50 Hz
Motor capacity	640 Watt single phase motor



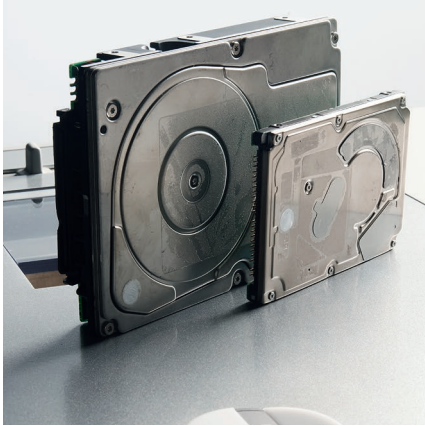
Dimensions	850 x 495 x 470 mm (H x W x D)
Weight	63 kg
ID-No.	11141001
GS certificate-No.	DP 10110

Product characteristics

At the touch of a button, the IDEAL 0101 HDP punches a hole completely through the hard drive, rendering the stored data unaccessible. The mechanical components, the PC board as well as the hard disc are damaged, which corresponds to security level H-3 of the DIN 66399 standard. Suitable for 3.5" or 2.5" hard drives (single feeding). Adjustable feed chute constructed of high quality steel. Handy slide lever for easy selection of hard drive size (3.5" or 2.5"). Transparent safety flap on the feed chute made of unbreakable plastic. Punching die made from hardened, nickel-plated steel. Sturdy steel endplate. LEDs for illuminating the feed chute during the punching process. Slider mechanism for unloading punching compartment. Destroyed hard drives drop into a sturdy plastic bin inside the cabinet. High-quality wooden cabinet with front opening door. SPS (Safety Protection System) safety package: electronically controlled, hinged safety flap for the feed opening; EASY-SWITCH multifunction control element for start and stop indicates the operational status of the machine with varying colour codes and back-lit symbols; jam protection for punching die with automatic reverse; automatic stop after the punching process; weight sensor for automatic shut-off when the collection bin is full; electronic door protection via a magnetic proximity switch; double motor protection. Quiet and powerful single phase motor rated for continuous operation. Sturdy Twin Drive System with fully enclosed gear box housing. Mobile on castors.

EBA 0101 HDP

Features



SUITABLE FOR 3.5" AND 2.5" HARD DRIVES

The hard drive punch IDEAL 0101 HDP is designed for the two most common hard drive sizes.



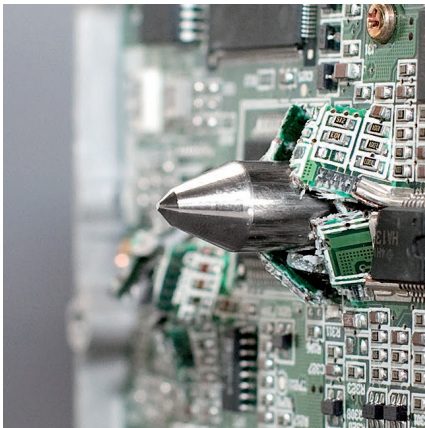
FEEDING CHUTE WITH SAFETY FLAP

The electronically controlled, transparent safety flap is an important part of the SPS (Safety Protection System) package. The punching die can only be activated if the safety flap is closed.



EASY-SWITCH FOR INTUITIVE OPERATION

The intelligent multifunction control element indicates the operational status of the machine with colour codes and back-lit symbols for safe and easy operation.



PUNCHING DIE FROM HIGH GRADE TOOL-STEEL

The punching die is made of hardened, nickel-plated tool steel. Durability is also guaranteed by a powerful single phase motor rated for continuous operation in combination with the sturdy Twin Drive System.



certificate
no. **DP 10110**
dated 01.11.2010

GS Test Certificate

Name and address of the holder of the certificate: (customer): Krug & Priester GmbH & Co. KG
Simon-Schweitzer-Straße 34
72336 Balingen

Name and address of the Manufacturer: see above

Product designation: Hard-drive Punch

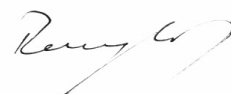
Type: Ideal 0101, EBA 0101

Testing based on: EN 60950-1 Information technology equipment – Safety;
Part 1: General requirements 04/2006
EN 12100-2:2004 Safety of machinery – Basic concepts; general principles for design; Part 2: Technical principles
EN ISO 13857:2008 Safety of machinery – Safety distances to prevent hazard zones being reached by upper and lower limbs

The type tested meets the requirements specified in article 7 para. 1 sentence 2 of the German Equipment and Product Safety Act. The holder of the certificate is entitled to affix the GS mark shown overleaf to the products complying with the type tested. At that, the holder of the certificate shall observe the conditions specified overleaf.

The present certificate including the right to affix the GS is valid until: **31.10.2015**

Further provisions concerning the validity, the extension of the validity and other conditions are laid down in the Rules of Procedure for Testing and Certification of September 2010.



Signature (Dr.-Ing. Renninghoff)

Postal address: Postfach • D-65173 Wiesbaden • Office: Rheinstr. 6-8 • D-65185 Wiesbaden
Phone: +49 (0) 611/131-219 • Fax: +49 (0) 611/131-155 • E-Mail: fadp.dp@bgetem.de • Pruefstelle@BGETEM.DE
612.17-Sm/Ho • Test report: A 10060 • Produktschlüsselnummer: 009.200508